

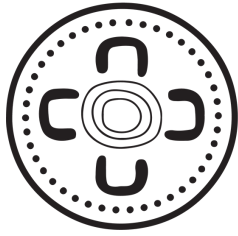


OONAH

ABORIGINAL HEALTH AND COMMUNITY SERVICES



**Annual Report
2022-2023**



OONAH

ABORIGINAL HEALTH AND COMMUNITY SERVICES ICN: 9155

was registered under the Corporations
(Aboriginal and Torres Strait Islander) Act in 2019

At Oonah, we strive to uphold a Culturally respectful approach that includes and strengthens all peoples, traditions, stories and Culture, now and for future generations. We acknowledge each individual's personal journey discovering their Cultural connections. Respect for traditional ways, Lore and custom is paramount when providing services and care planning.

The Corporation and its members are committed to providing a central point of contact for Community members to access services and programs across the Outer and Inner Eastern regions of Melbourne.

In addition to the direct provision of services and programs, Oonah also aims to improve Cultural competency and responsiveness in health service delivery across the region, and as such we have established a range of local partnerships with service providers that enable people to be linked into additional supports they may require.

Oonah continues to fulfil the work of the founding members, with our committed Board of Directors, and through our operations as staff work together to ensure sound and transparent governance, guidance, and quality delivery of services.

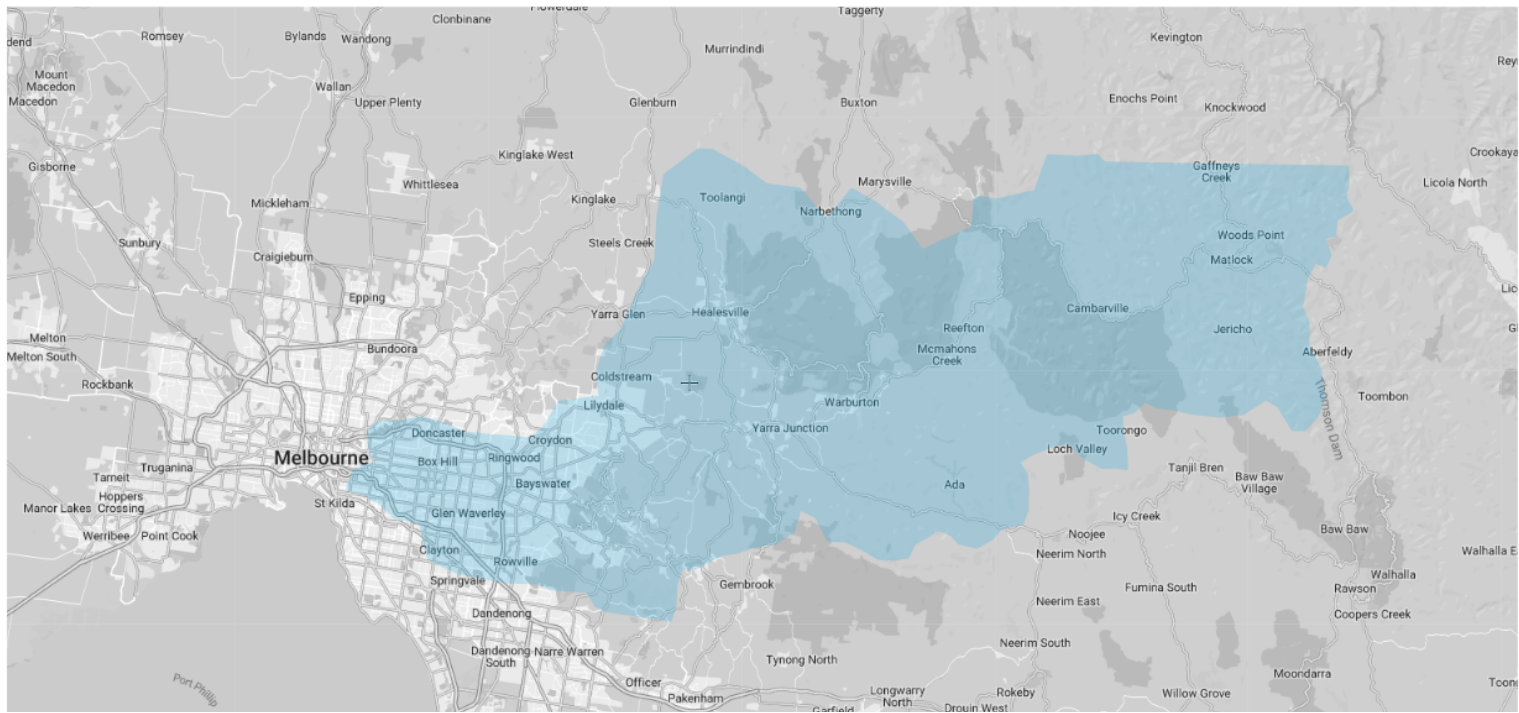
"This report may contain images of
Community members who have since passed
on to the Dreaming"

The Board of Oonah Health & Community Services Aboriginal Corporation would like to Acknowledge the Traditional Custodians of the land in which we live and work, the Wurundjeri peoples of the Kulin Nation, and pay our deep respect to their Elders: Past, Present, and Emerging.

We Acknowledge our diverse Community who gather at Oonah Health & Community Services, coming from many mobs near and far, generously sharing their rich Culture and lived experience with us over the years.

We Acknowledge that Sovereignty was never ceded; that this land has a profound history dating back thousands of years and belonging to the oldest continuing living Culture in world.

Always Was. Always Will Be.



Oonah Catchment

Inner and Outer East

Aboriginal Health in Aboriginal Hands is a priority for Oonah and our Community, of approximately 6,000 individuals. Our client reach covers multiple State Electorates and the Local Government Areas of Yarra Ranges, Knox, Maroondah, Boroondara, Manningham, Whitehorse and Monash.

Yarra Ranges

Badger Creek, Beenak, Belgrave, Belgrave Heights, Belgrave South, Big Pats Creek, Cambarville, Chirnside Park, Chum Creek, Clematis, Coldstream, Dixons Creek, Don Valley, Emerald, Fernshaw, Ferny Creek, Gilderoy, Gladysdale, Gruyere, Healesville, Hoddles Creek, Kallista, Kalorama, Kilsyth, Launching Place, Lilydale, Lysterfield, Macclesfield, Matlock, McMahon's Creek, Menzies Creek, Millgrove, Monbulk, Montrose, Mooroolbark, Mount Dandenong, Mount Evelyn, Mount Toolebewong, Narre Warren East, Olinda, Powelltown, Reefton, Sassafras, Selby, Seville, Seville East, Sherbrooke, Silvan, Steels Creek, Tarrawarra, Tecoma, The Patch, Three Bridges, Toolangi, Toorongo, Tremont, Upper Ferntree Gully, Upwey, Wandin East, Wandin North, Warburton, Warburton East, Wesburn, Woori Yallock, Yarra Glen, Yarra Junction, Yellingbo and Yering.

Knox

Bayswater, Boronia, Ferntree Gully, Upper Ferntree Gully, Knoxfield, Wantirna, Wantirna South, Rowville, Scoreby, Lysterfield, The Basin.

Maroondah

Bayswater North, Croydon, Croydon Hills, Croydon North, Croydon South, Heathmont, Kilsyth South, Park Orchard (part), Ringwood, Ringwood East, Ringwood North (part), Vermont (part), Warranwood and Wonga Park (part).

Boroondara

Ashburton, Balwyn, Bawlyn North (part), Camberwell, Canterbury, Deepdene, Glen Iris (part), Hawthorn, Hawthorn East, Kew, Kew East, Mont Albert (part) and Surrey Hills (part).

Manningham

Bulleen, Doncaster, Doncaster East, Donvale, Nunawading, Park Orchards, Ringwood North, Templestowe, Templestowe Lower, Warrandyte, and Warrandyte South, Wonga Park.

Whitehorse

Blackburn, Blackburn North, Blackburn South, Box Hill, Box Hill North, Box Hill South, Burwood (part), Burwood East, Forest Hill, Mitcham, Mont Albert (part), Mont Albert North, Nunawading (part), Surrey Hills (part), Vermont (part), Vermont South.

Monash

Ashwood, Clayton, Glen Waverley, Hughesdale, Huntingdale Mount Waverley, Mulgrave, Notting Hill, Oakleigh, Oakleigh East, Wheelers Hill, Chadstone (part), Burwood (part) and Oakleigh South (part).

CHAIR PERSON'S REPORT

Assoc. Prof Dr Jenine Godwin-Thompson

Gurumba bigi ("Hello" Yaggera Meeanjin- Brisbane).

What another amazing year of growth for Oonah. It has been such a privilege to walk this journey and in such a challenging time for many of our Community members, Oonah has aimed to continue to support and deliver services across the footprint of the Eastern Metropolitan Melbourne areas.

Like many of our Community controlled organisations we believe in a holistic approach to health, one which recognises the interconnectedness of the mind, body and spirit being intertwined, not just with the individual, but the whole Community. This means that it is vital for us to listen to the voices of our Community, and within means, deliver a range of specialised program areas, supports and services that fit their unique needs.

However, it does take a village to do this work. Oonah's passionate staff, lead by our exceptional CEO, Amanda Hand, and with the support of the Board, are driving the organisation's Vision as a Community health service. A major part of that Vision is for the new building in Healesville, the heart of Oonah. This site will serve as the Belonging Place, and access to Culturally responsive services for Community across the Eastern footprint will remain at the forefront of Oonah's purpose.

Even though the recent Referendum was not the outcome many of us were wanting, we will not lose sight of the important work we need to do for and alongside Community. With GP clinical services to start very soon, and further funding and support to Closing the Gap, Oonah is in a good position to reach our 2024 goals.

I would personally like to extend my gratitude and thanks to my fellow Board members, who voluntarily give time to Oonah, for their ongoing dedication and support.

Onwards and Upwards!!!

Jenine



Chief Executive Officer Report

Amanda Hand

This year's Annual Report highlights the many positive impacts that Oonah has had on our Community for the 2022/23 year. Our report is an opportunity to communicate to our members, our Community and our funders on how we are delivering services and programs across the health continuum, aligned with the Strategic Goals of Oonah.

Over the past 12 months, we have seen substantial investment in Aboriginal Social and Emotional Wellbeing by the Victorian Government, which has enabled Oonah to expand our service offering across the Eastern Region. Our team has grown to include specialist Mental Health Nurses to improve supports for clients in both the Primary and Tertiary Mental Health system. These funds have also supported clients to access private providers to support long-term relationships with Counsellors and Psychologists. Our ability to support patient choice in where and how they are seen is a significant step in enabling self-determined client journeys.

Oonah continued building on existing relationships with Local Government with programs such as Best Start, which has helped grow our Healesville Playgroup. This program will continue independently in 2023/24 and currently supports over 40 children and carers to gather, share and support each other's journey as families. Oonah was proud to establish the Eastern Youth NAIDOC Balls, creating opportunities to celebrate our amazing young Community members. Both events showcased the talent and pride our younger generation have in their Culture, as well as their contributions to Community in keeping Culture strong.

With COVID restrictions lifted the Oonah team made a conscious effort to organise events that support Community to gather again. The team tirelessly organised beautiful Baby Welcome to Country Ceremonies with the support of Wurundjeri Elders, Christmas Celebrations, Information Sessions, Wills Days, NAIDOC events, and respectful Sorry Day gatherings.

Oonah has focused on getting the message about our service and Communities needs to those that have influence and meeting with candidates for both State and Federal Elections, presented to sitting Victorian Parliament members, supported the Inner and Outer Eastern Education group through presenting and Principles Forums and Marrung gatherings, as well as actively participating at VACCHO and NACCHO meetings.

Oonah's continual growth strengthens the case for our Belonging Place infrastructure, a space that is purpose-built for Community with both areas for clinical services along with safe spaces to gather. We will continue to lobby for purpose-built facilities in the Eastern Region. The team at Oonah is constantly looking forward to the future and we are excited for our ongoing opportunities to provide Community with Quality Health and Wellbeing services that are designed and led with a Cultural lens. In 2024 we look forward to providing GP services, traineeships, additional locations and many opportunities.

I would like to thank the Oonah Directors for their continued support of me as the CEO. I would also like to thank our amazing staff for their tireless work and dedication to both our service and their Community.



Our Purpose

To establish and operate a base from which an integrated program of health, well-being, education and employment services for the Aboriginal Community are delivered within a cultural framework of: Respect, Caring and Sharing.

Our Vision

A healthy, strong and skilled Aboriginal and Torres Strait Islander Community, Acknowledging the diversity in Melbourne's East.

Oonah's Governance Model

Community

Oonah Board

Chairperson
Assoc. Prof.
Dr Jenine Godwin-Thompson

Deputy Chair
Nathan Fenelon

Treasurer
Diarmuid McAlary

Secretary
Anita Koochew

Dr. Andrew Peters
Lea Jones
Melissa Jones
Nikki Madgwick
Dr. Jan Mahoney

Finance Sub Committee

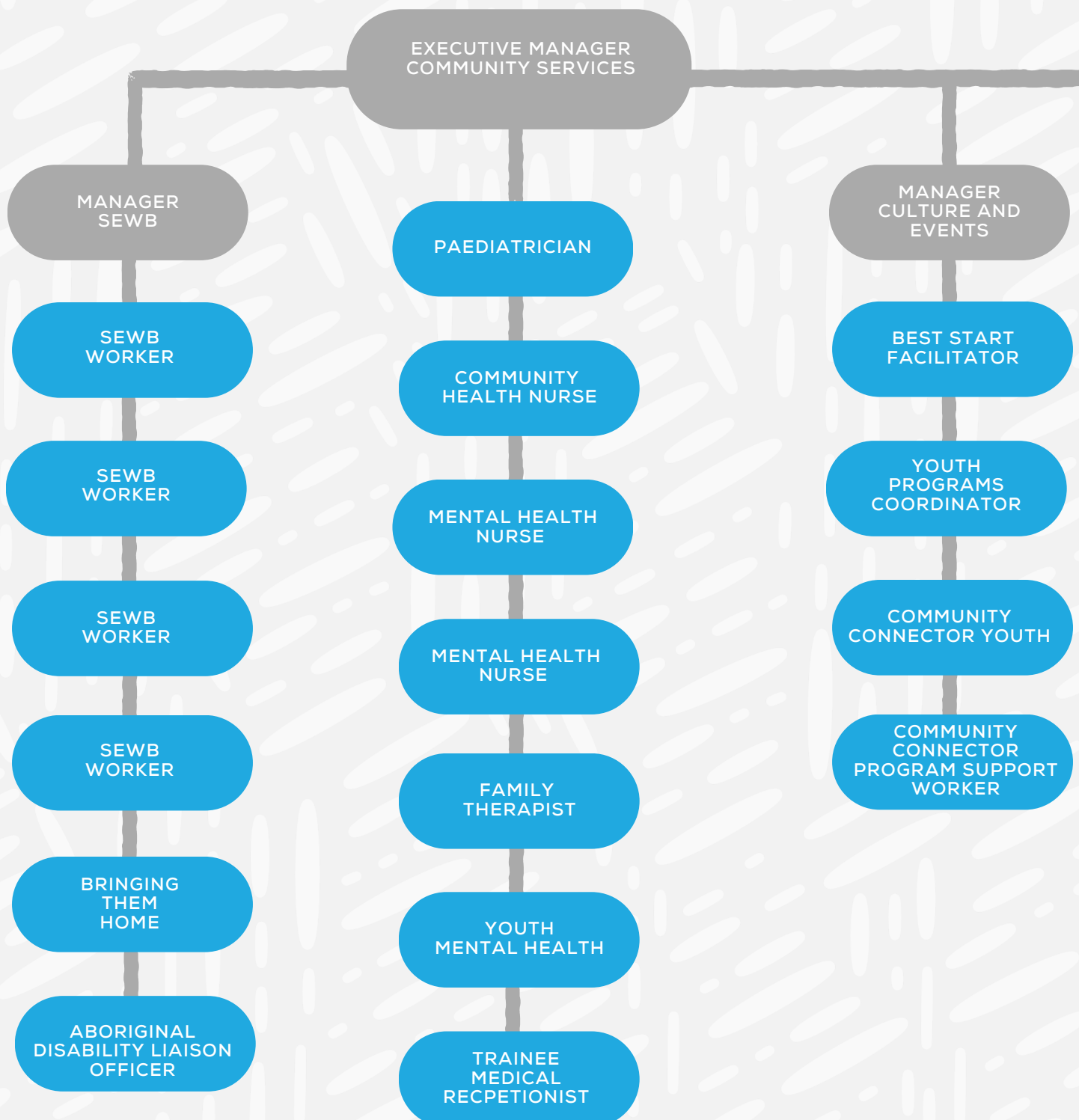
Belonging Place Sub Committee

Operational Staff

Organisational Structure

We have had a tremendous year of growth at Oonah, which has seen many new and exciting employment opportunities during this period. We were able to introduce several entirely new roles, thanks to the support of our funders and the advocacy of our CEO.

As we continue to establish our position as the go-to Aboriginal Community Controlled Health Organisation in Melbourne's East, we are able to apply for funds that better support this transition into the health sector. This in turn means that parallel to our service delivery expanding, our Organisational Structure continues to be redeveloped and adjusted to reflect this next phase in Oonah's progression.



BOARD OF DIRECTORS

CEO

EXECUTIVE MANAGER
CORPORATE
SERVICES

COMMUNICATIONS
COORDINATOR

EXECUTIVE
ASSISTANT TO
CEO

QUALITY
SUPPORT

FINANCE CLERK

TRANSITION
SUPPORT OFFICER

TUCKER BAG
COORDINATOR

CORPORATE
SUPPORT

COMMUNITY
CONNECTOR PROGRAM
SUPPORT WORKER

Clinical Services

Oonah has seen particular growth within our Clinical Services during this reporting period; through the employment of our very own Paediatrician and Community Nurses, who support Community to access external health services, advocate for appropriate care and provide health promotion and education.

Oonah has continued hosting regular Podiatry, Optometry and Audiology clinics, while also supporting Community to access mental health supports both internally and externally through brokerage.

If you are interested in accessing our Clinical Services, please e-mail: intake@oonah.org.au

Optometry

This service is supported by the College of Optometry and funded by Rural Workforce Agency Victoria. This is a free service for Aboriginal and Torres Strait Islander clients, enabling them to access eye exams, referrals, and a free pair of glasses.



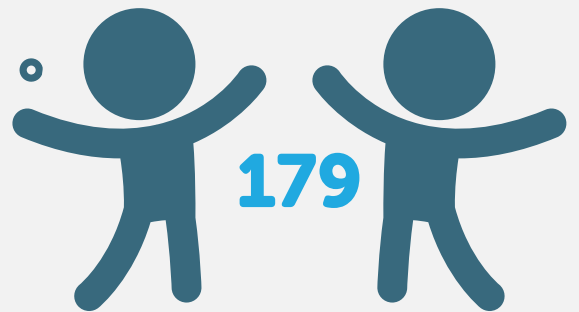
Total Clients

**30
New Clients**

Paediatrician

Funded by Oonah and Rural Workforce Agency Victoria, and employed directly by Oonah. We offer a free fortnightly Paediatric Service supporting our children to grow up strong.

21 Clinics



Total Clients

Podiatry

Dr. Michael Ramadan provides Podiatry care to clients that have a GP Management Plan or Health Clinic referral. This service is free and funded by Rural Workforce Agency Victoria.

We can also support access to orthotics through Eastern Melbourne Primary Health Network funding.



Audiology

Funded by Rural Workforce Agency Victoria, this service supports healthy ears for all ages in Community.

19

Total Clients

Flu Vaccination Clinic

Oonah ran one Vaccination Clinic earlier in the year, offering:

- Fluvax
- Pfizer vaccine



Total Clients

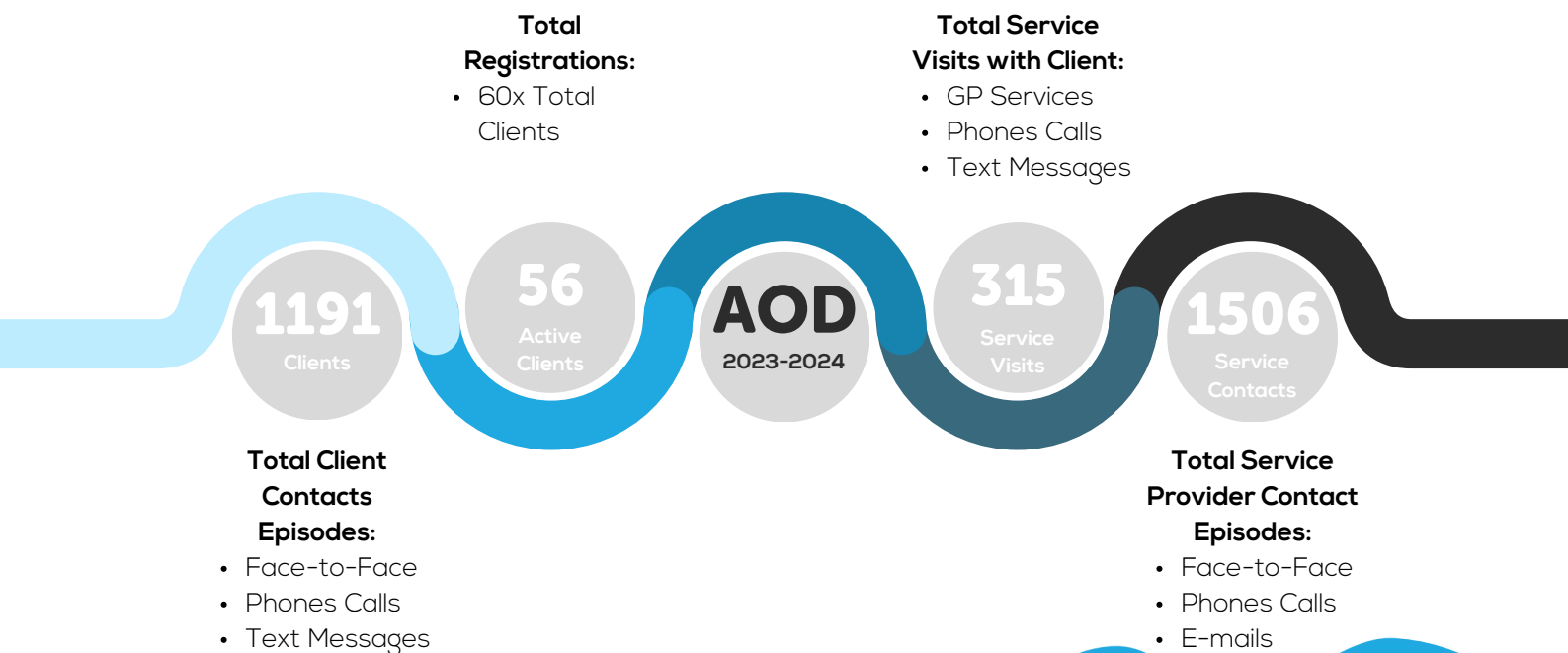
Social & Emotional Wellbeing

Across the SEWB Team, workers have been assisting Community to access the NDIS and EMPHN Funded Stepped Care programs as needed, trying to ensure they feel empowered throughout the process.

The SEWB Team works alongside our Mental Health Team to provide support for mob from a holistic model of care. The Mental Health Nurses can support Community on their recovery journey and coordinate both patient and in home care.

Through expanding SEWB funding with the Victorian Government, we are now able to support Community to access external mental health providers on a case-by-case basis to ensure best practice.

If you would like to access our SEWB Team, please e-mail:
intake@oonah.org.au



Mental Health Team:

It has been an incredibly exciting year for our newly formed Mental Health Team, seeing amazing outcomes for Community, particularly in the recovery space.

As well as our two Mental Health Nurses, who service all ages across Community, we have our Youth Mental Health Worker who specialises in working with First Nations young people. Having this youth specific role has assisted in relationship building with the local High School, allowing for this worker to work directly from the High School once a week.

If you would like to access our Mental Health Team, please e-mail:
intake@oonah.org.au



215

Average Monthly Clients



Total Client Contacts

12,465

NDIS Access Support

3203x Clients Contacts

91

Stepped Care Clients

Stepped Care

123

NDIS Clients

SEWB

Team Data

131

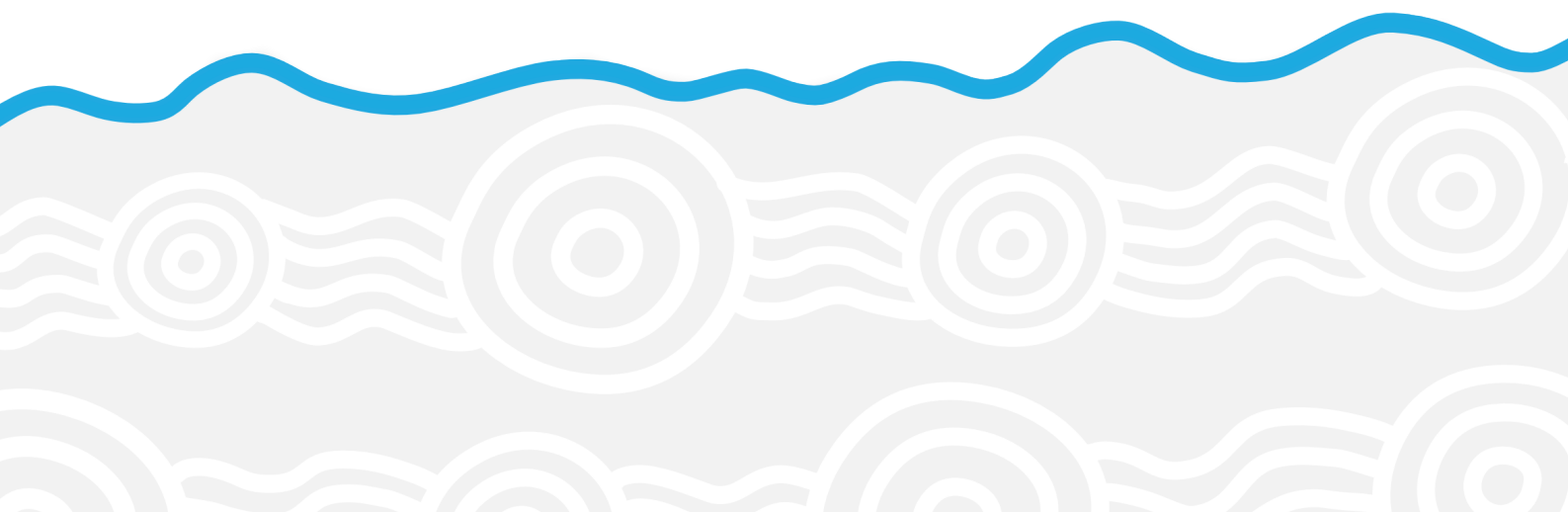
BTH Clients

Bringing Them Home (BTH)

37

EHS Group Sessions

BTH Worker and SEWB Workers supported



External Cultural Training Delivered through Oonah:

Oonah have been providing Cultural Training for external agencies for several years now, over time growing and expanding our training and workshop services to include:

- **Cultural Guidelines Presentation**
- **“How to be an Ally” Workshop**
- **Yarning about “Child Safety” through a Cultural Lens**
- **Cultural Audits**

Each training package is delivered by Oonah’s Manager Culture & Events and can be facilitated either in person or online, with the exception of the Cultural Audits.

If you would like to book a training session, please e-mail:
oonah@oonah.org.au

NFP Training Service

2x Cultural Safety Guidelines Presentation

36

Participants

20

Participants

57

Participants

41

Participants

30

Participants

Youth Services Network

1x Yarning about Child Safety through a Cultural Lens

Early Years Services

3x Cultural Safety Guidelines Presentation

Mental Health & Disability Support Service

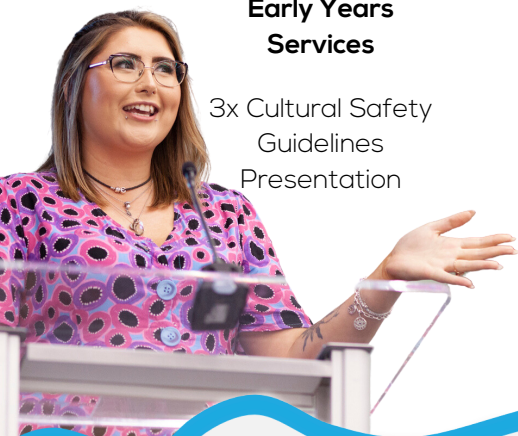
1x Cultural Safety Guidelines Presentation

1x How to be an Ally Workshop

Family Services Alliance & Family Violence Service

1x How to be an Ally Workshop

1x National Reconciliation Week Cultural Presentation



Programs

Playgroup

Oonah's Play Group continues to operate on a weekly basis, with a focus on connecting local families with the resources they require. In 2023, the group was moved to an Early Years-specific centre, with a program structure that was reframed to reflect a Culturally appropriate Best Start perspective.

The program is centred around early childhood development and foundational skills. Playgroup is a pathway to accessing Oonah Supports and Services, Oonah Programs, as well as Welcome Baby to Country Events.



33

0-5 Years Enrolled



Youth Club

This year Youth Club has seen the group double in registrations, with Oonah expanding our transport services to include the following Schools:

- Healesville Primary School
- Badger Creek Primary School
- Woori Yallock Primary School
- Yarra Glen Primary School

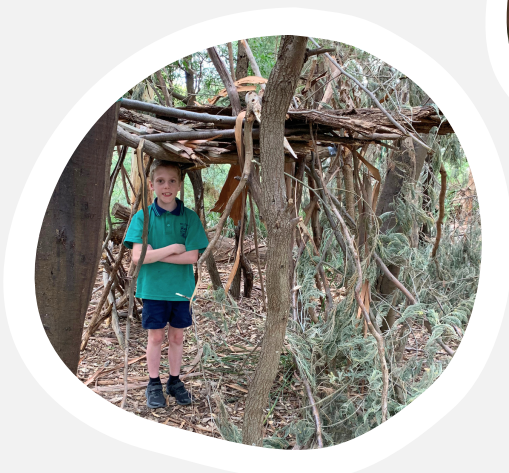
We have had a particular focus on placed-based Cultural education this year; scheduling in regular outings on Country with Darren Wandin, as well as Woi Wurrung language lessons with Brooke Wandin-Collins.

In the coming year we will be expanding our Youth Club Program to also be delivered at Kilsyth Primary School.



25

5-13 Years Enrolled



Earth, Heart, Spirit

Earth, Heart, Spirit transformed into an Aboriginal Women's Group this year, bringing Tiddas together to learn more about their Culture and form strong connections. EHS has a holistic approach to health and wellbeing, delivered in a Culturally safe and supportive environment.

Craft Group

The Craft Group gathers at Oonah every Friday, allowing the Community to come together and engage in craft activities of their choosing. Occasionally, the group will schedule outings to craft shops, to gather materials, or simply places of interest.

This group is self-paced and Community-led, making it a delightful social gathering that is open to all.

Men's Group

Oonah has been in partnership with the Aboriginal Health Team at Eastern Health to support the Men's Group program. Through delivering this program, we have been able to curate various activities and excursions. The participants explore activities that engage with their Culture, form connections, and facilitate a secure space to talk, get support, and exchange ideas.



Wominjeka Warrior's

For the first six months of this reporting timeline Oonah ran the Young Women's Group and Young Warrior's Group separately. However, at the beginning of this year we offered a camp to both cohorts, which saw the teens grow strong bonds with one another. Taking into account the feedback from participants, the decision was made to combine these two groups into the Wominjeka Warriors program. This is for High School aged First Nations young people, with a particular focus on health and fitness.



2 Youth Sports Sponsorships

Tuckerbag

It has been quite a financially challenging year for most of us, with various impacts to social and emotional wellbeing causing distress amongst many in Community.

Providing food security, through increased Food Bank pick-ups, regular Second Bite and Aldi Food Rescue collections, Food Share and ECOSS donations, as well as occasional additional purchased items during this time has been absolutely essential in supporting a holistic approach to health and wellness for mob.



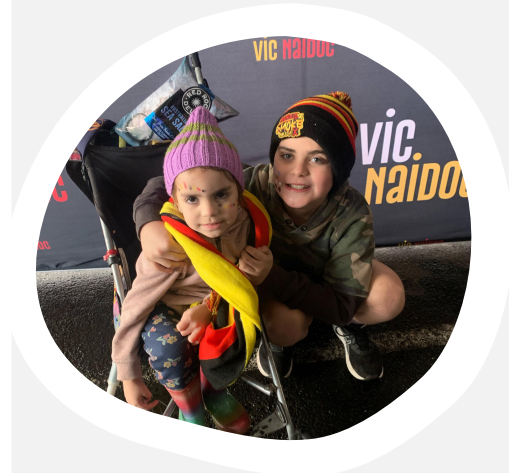
Events

This reporting period was particularly exciting for Events, as Oonah's ever growing workforce enabled increased delivery of engagement opportunities throughout the year.

Oonah assisted with transport, access, promotion and supported participation to attend Events across the Eastern Metropolitan Region (EMR).

NAIDOC March

We gave 24 Community members the opportunity to attend the NAIDOC March in Melbourne. This NAIDOC celebration had been eagerly anticipated and despite the weather being unfavourable, everyone had a deadly time celebrating NAIDOC together.



Oonah Youth NAIDOC Ceremony

After countless years of Community giving feedback that they wanted to celebrate our youth during NAIDOC Week, Oonah put on the first ever Youth NAIDOC Ball in the EMR, which saw 19 youth and 11 adult/carers registered. This particular event was for ages 13-17, while we also held a separate event for children aged 5-12 years.

This event provided Community, Service Providers and Case Workers the chance to shine a light on young achievers in Community, and with our Kid-Friendly Form we also gave young people the opportunity to nominate either themselves or their peers for excelling in the below categories:

- **Respecting Elders**
- **Caring for Country**
- **Future Leader**
- **Education**
- **Art**
- **Sport**
- **Kid's Choice**





Oonah Children's NAIDOC Ceremony

As well as the Youth event, we decided to run a separate Award Ceremony for our Primary School aged kids, providing them with a sense of ownership over their very own NAIDOC Ball. We had 17 children and 13 adult/carers registered for the event.



EMR NAIDOC Ball

Oonah assisted with access to the EMR NAIDOC Ball through offering a shuttle bus as transport and supported 17 Community members to attend.



Oonah's NAIDOC Virtual Art Show

Oonah continued our tradition of hosting a Virtual NAIDOC Art Show on our Facebook page, where people could "like" (or vote) on Community artwork for a People's Choice Award, and we also had Judge's Choice Awards as well.



NAIDOC Community Lunch

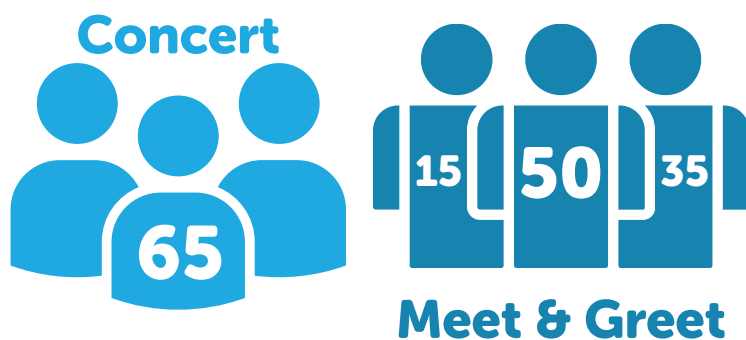
We held a lovely NAIDOC Community Luncheon at Sanctuary House, to offer another opportunity for Community to come and celebrate NAIDOC.



Baker Boy Meet and Greet and Performance

Oonah were thrilled to co-present Baker Boy's concert at the Memorial Hall in September of 2022, as well as organise a small gathering of local youth for a Meet and Greet prior to the show.

At the Meet and Greet we had 15x Oonah youth and 35x Worawa students attend. We were also able to support engagement at Baker Boy's concert through purchasing 65x Community tickets.



Wills Power Of Attorney Day

In partnership with Eastern Community Legal Centre, Oonah hosted two Information Sessions for Wills and Powers of Attorney, during the Earth, Heart, Spirit program.

Lawyers were present to share their expertise and provide guidance to attendees. Participants were then offered follow-up sessions where they could work with lawyers to create their own wills, free of charge.



Teddy Bears Picnic

Oonah supported CIRE's Teddy Bear Picnics, in both Yarra Junction and Chirnside Park locations, with a pop-up stall at both promoting our services.

As a team, we also assisted our Playgroup in participating in the Chirnside Park event.

The total number of attendees for both events was over 300 participants!



Vigil for Cassius Turvery

In partnership with EACH, BWAHS, and MMIGP, we came together as Community to hold a memorial for Cassius Turvery.

We felt that it was important to provide a space for mob to come together and remember this brave and inspiring young boy, whose life was taken far too soon.

#FOREVER15

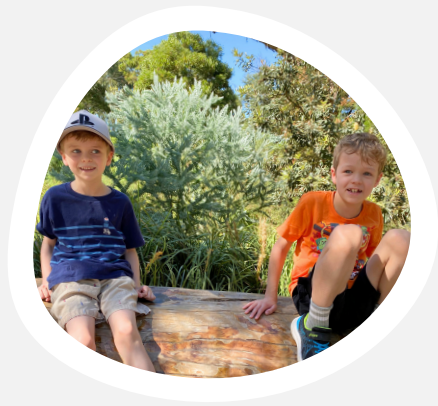
Community Christmas Celebrations

Oonah hosted our first Community Christmas Celebration since the COVID-19 pandemic at the Healesville Sanctuary. Our focus was on creating opportunities for families to gather and create memories. The Sanctuary was an ideal location to host such an event, as evident in the 158 registered attendees. Every registered child received an Oonah bag/backpack with an age-appropriate First Nations book inside, as well as some other goodies!

Some other Oonah Christmas activities included handing out 64x Hampers to Community and hosting an Elder's, Aunts and Uncle's Christmas Luncheon with 35x attendees.



Healesville Sanctuary



Bowel Cancer Screening Yarning Day

We had 13 participants sitting in on a yarn about Bowel Cancer, in particular having discussions that helped to destigmatise the Bowel Screening process.



Beautiful Shawl Project

The Beautiful Shawl Project is an initiative that partners with local artists to create unique shawls, that women can use for a more comfortable and Culturally appropriate breast screening experience.

Women who have participated in the project have shared that they felt a sense of comfort and strength during an otherwise uncomfortable experience. This initiative has been truly transformative for the Community.



Artwork by: Jenine Godwin-Thompson

Goodbye Aunty Flo

Performers from Ilbjerri Theatre Company put on a production exploring the unique journeys of three women going through Perimenopause, sharing how it can affect every woman differently. It opened a dialog about a usually taboo topic and left viewers feeling empowered.



Ngulu Festival - Yarra Valley ECOSS

Oonah staff ran an information stall at the Ngulu Festival, sharing ways we could support Community through holistic approaches to health and wellbeing.





Welcome to Country Ceremony

Welcoming little Boorais to Country is such a special and precious time for families, so you can imagine how thrilled we were to be able to host three Welcome Baby to Country Ceremonies during this reporting period.

3 Events Held



163 attendees

48 Babies/Children total



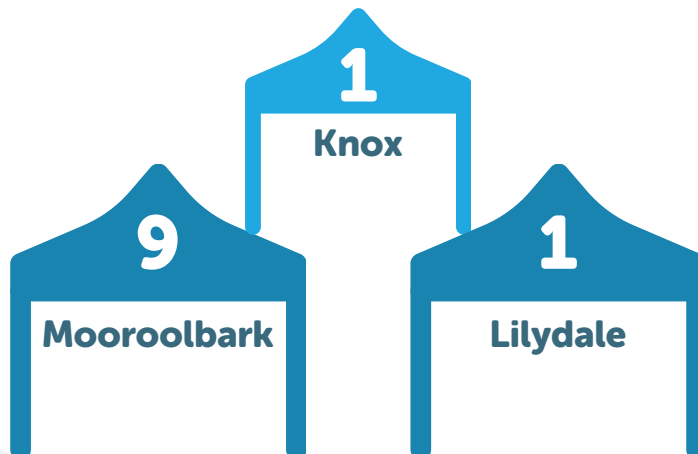
Service Provider Open Day

Oonah hosted a Service Provider event earlier this year, inviting representatives from various organisations to meet the Team and explore our site. This also offered them an opportunity to network and connect with one another.



Oonah Pop-Ups

As we continue to grow our service delivery, we want to ensure that Oonah has a presence not only in Outer East, but Inner East too. These pop-up's were the first of many we plan to do, moving around to a few other key locations where Community need better access to supports.



Sorry Day Event

Oonah hosted another Sorry Day event, as is tradition over recent years. Giving Community the opportunity to come and reflect on past experiences, in a safe and secure space.



YRC Reconciliation Week Event

Oonah had the opportunity to feature in the Yarra Ranges Council's Reconciliation Week Event, sharing the various health and wellbeing supports we provide to Community. We were able to highlight our expansion in service delivery and recruitment, including: Mental Health Nurses, Aboriginal Disability Support Officer, Podiatry, Optometry, Audiology, Paediatrics, Vaccine Access through St Vincent's Health Partnership, as well as Physiotherapy, Diabetes Educators and General Practitioners coming very soon!



This was also an excellent opportunity to showcase our Youth Club Program, through promotional video which can be accessed via the link below:

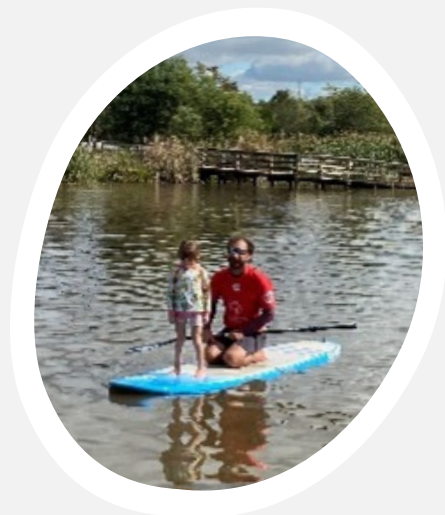


<https://youtu.be/yUKjEsOojRg?si=b05DvXWU9laeJmyW>

School Holiday Activities

During this reporting period, Oonah provided the following School Holiday Activities for young people:

- **Luna Park Excursion**
- **Wominjeka Warrior's Camp**
- **RecLink Games Day**
- **Stand Up Paddle Boarding**
- with Surfing Victoria





Indigenous Approaches to Health Equity

- Atlantic Fellows for Social Equity | Melbourne University

Oonah hosted the group onsite and presented on addressing barriers to Health Equity.



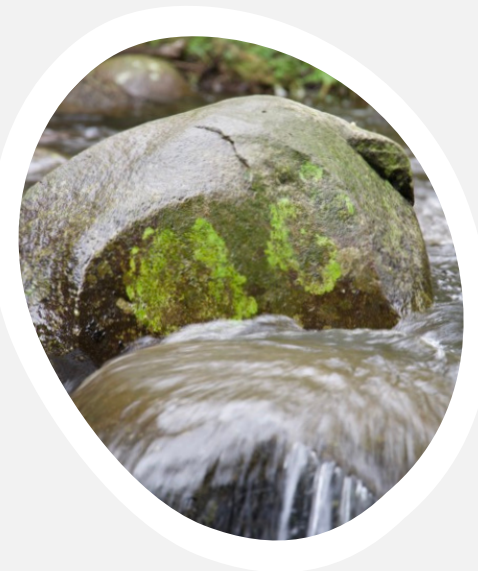
Department of Health Summit

Two Indigenous Oonah staff were interviewed as part of a video that featured at the Summit.



VACCHO Aboriginal Health & Wellbeing Partnership Forum

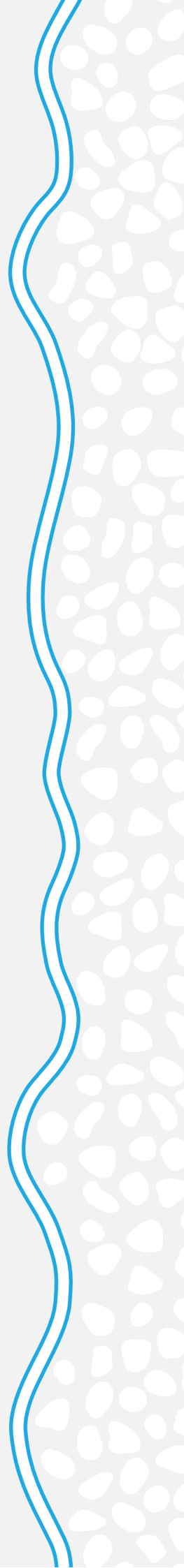
Oonah's CEO, Amanda Hand, presented on Data Sovereignty at the Forum on the Discussion Panel. Then the participants were invited to Oonah to see our facilities and learn more about our service delivery.



Best Start 'On Country Walk'

-With Darren Wandin & Nelson Aldridge

This 'On Country Walk' saw 18 Early Year's professionals learning about traditional bush medicine, bush tucker, Kulin Seasons, and caring for Country, to help strengthen Cultural Literacy.



Financial Report

Snapshot:

This is a snapshot of our revenue and expenditure over the financial year 2022-2023. You can find more detail in the extracts from our audited Annual Financial Statements for the year ended 30 June 2023 in the following pages.

Revenue

	2023	2022
	\$	\$
Grants Received		
Federal Government	704,812	658,441
State Government	2,442,973	1,703,141
Local Government	129,302	50,101
Philanthropic	484	63,340
Other	41,026	82,904
TOTAL:	3,318,597	2,557,927

Other Income

	2023	2022
	\$	\$
Interest	46,326	763
Donations	1,174	6,526
Memberships	165	138
Net gain disposal of property, plant and Equipment	6,364	-
TOTAL:	54,029	7,427
Total Revenue and Other Incomes	3,372,626	2,565,354

Audited Financials

Financial Report Statement of Profit and Loss and Other Comprehensive Income

For the Year Ended 30 June 2023

	2023	2022
	\$	\$
Revenue + Other Income	3,372,626	2,565,354
Employee Expenses	(1,983,225)	(1,441,572)
Depreciation and amortisation expenses	(78,515)	(90,840)
Occupancy Expenses	(78,123)	(29,199)
Program Expenses	(465,691)	(244,019)
Finance Expenses	(1,837)	(3,067)
Other Operating Expenses	(252,051)	(75,062)
Surplus for the year	513,184	681,595
Total comprehensive income for the year	513,184	681,595

Statement of Financial Position

as at 30 June 2023

This should be read in conjunction with the accompanying notes which can be made available upon request within the full version of our audited Annual Financial Statements for the year ended 30 June 2023.

	2023	2022
	\$	\$
ASSETS		
CURRENT ASSETS		
Cash and cash equivalents	3,667,002	3,419,392
Trade and other receivables	114,337	137,409
TOTAL CURRENT ASSETS	3,781,339	3,556,801
NON-CURRENT ASSETS		
Property, plant and equipment	410,953	380,499
Right-of-use assets	12,437	34,491
TOTAL NON-CURRENT ASSETS	423,390	414,990
TOTAL ASSETS	4,204,729	3,971,791
LIABILITIES		
CURRENT LIABILITIES		
Trade and other payables	200,166	288,110
Lease liabilities	12,802	22,335
Employee benefits	96,113	86,521
Other financial liabilities	2,222,715	2,402,276
TOTAL CURRENT LIABILITIES	2,531,796	2,799,242
NON-CURRENT LIABILITIES		
Lease liabilities	9	12,809
Employee benefits	5,870	5,870
TOTAL NON-CURRENT LIABILITIES	5,879	18,679
TOTAL LIABILITIES	2,537,675	2,817,921
NET ASSETS	1,667,054	1,153,870
EQUITY		
Reserves	550,000	400,000
Retained surpluses	1,117,054	753,870
TOTAL EQUITY	1,667,054	1,153,870

Financial Report

Oonah Health & Community Services Aboriginal Corporation

ABN 79 450 431 271

Directors' Declaration

The directors of the Corporation declare that:

1. The financial statements and notes, as set out on pages 5 to 21, are in accordance with the *Corporations (Aboriginal and Torres Strait Islander) Act 2006* and:
 - a. comply with Australian Accounting Standards - Simplified Disclosure Standard; and
 - b. give a true and fair view of the financial position as at 30 June 2023 and of the performance for the year ended on that date of the Corporation.
2. In the directors' opinion, there are reasonable grounds to believe that the Corporation will be able to pay its debts as and when they become due and payable.

This declaration is made in accordance with a resolution of the Board of Directors.



Director
Assoc Prof. Dr Jenine Godwin-Thompson



Director
Mr Diamuid McAlary

Dated **30 October 2023**

Auditor's Independence Declaration



Nexia Melbourne Audit Pty Ltd
Level 35, 600 Bourke St
Melbourne VIC 3000
E: info@nexamelbourne.com.au
P: +61 3 8613 8888
F: +61 3 8613 8800

nexia.com.au

AUDITOR'S INDEPENDENCE DECLARATION UNDER SECTION 339-80 OF THE CORPORATIONS (ABORIGINAL & TORRES STRAIT ISLANDER) ACT 2006

TO THE DIRECTORS OF OONAH HEALTH & COMMUNITY SERVICES (ABORIGINAL CORPORATION) ICN 9511

As lead audit partner for the audit of the financial statements of Oonah Health & Community Services - Aboriginal Corporation for the financial year ended 30 June 2023, I declare that to the best of my knowledge and belief, there have been no contraventions of:

- (a) the auditor independence requirements of the *Corporations (Aboriginal and Torres Strait Islander) Act 2006* in relation to the audit; and
- (b) any applicable code of professional conduct in relation to the audit.

A stylized, handwritten-style signature of the word 'Nexia' in blue ink.

Nexia Melbourne Audit Pty Ltd
Melbourne

A handwritten signature in blue ink that reads 'Andrew S. Wehrens'.

Andrew S. Wehrens
Director

Dated: this 30th day of October 2023

Advisory. Tax. Audit.

Registered Audit Company 291969

Nexia Melbourne Audit Pty Ltd (ABN 86 005 105 975) is a firm of Chartered Accountants. It is affiliated with, but independent from Nexia Australia Pty Ltd. Nexia Australia Pty Ltd is a member of Nexia International, a leading, global network of independent accounting and consulting firms. For more information please see www.nexia.com.au/legal. Neither Nexia International nor Nexia Australia Pty Ltd provide services to clients.

Liability limited under a scheme approved under Professional Standards Legislation.

Partners & Funders:

These are just some of the many partnerships Oonah is involved in:

- Access Health
- Aldi Food Rescue Program
- Anchor
- Australian College of Optometry
- Boorndawan Willam Aboriginal Healing Service
- Bendigo Bank
- Cire Services
- Coles Healesville
- Department of Family, Fairness & Housing
- Department of Health
- Department of Justice & Regulation
- Dr. Georgia Walker
- Dr. Michael Ramadan
- Dr. Sally Munday
- EACH
- Eastern Community Legal Centre Inc
- Eastern Health – Aboriginal Health Team
- Eastern Melbourne Primary Health Network
- ECOSS
- FareShare
- Foodbank Victoria
- Healesville Sanctuary
- Healesville Women 4 Women
- Healesville Local Area Network
- Healesville District Service Providers Network
- Hearing Australia
- Inspiro Community Health
- Mullum Mullum Indigenous Gathering Place
- National Indigenous Australians Agency
- National Aboriginal Community Controlled Health Organisation
- Ngwala Willumbong Aboriginal Corporation
- North Eastern Public Health Unit
- Rural Workforce Agency Victoria
- SecondBite
- Swinburne University
- Victorian Children’s Clinic
- VicHealth
- Victoria University
- Victorian Aboriginal Community Controlled Health Organisation
- Wandoon Estate
- Wellways
- Women’s Health East
- Yarra Ranges Council
- Yarra Ranges Emergency Relief Network

Plus many more...

Meet the Oonah Team...

Staff:

- Amanda Hand
- Rachel Foster
- Belinda Stuart
- Caitlin McDonald
- Catherine Wilkinson
- Roslyn Jenkins
- Susan McDonald
- Gail Crozier
- Andrea Ware
- Melissa Smith-Cooney
- Joe Gontier
- Dr. Renata Kukuruzovic
- Rebecca Curry
- Fiona Butera
- Kim Palmer
- Madeline Sikorski
- Natalie Byron
- Nikki Rongong
- Salli Weston-Barry
- Lea Wilson-Dancey
- Sandra Harris
- Tahra Buckley
- Katy Bottomley
- Katherine Hamer
- Natasha Zangmeister
- Kayla Wandin-Collins
- Nikki Madgwick
- Chloe Baulch

Want to join our ever-growing team?

If you or someone you know is interested in learning more about our employment opportunities, please send through an Expression of Interest to:

hr@oonah.org.au

Volunteers:

- Andy Cheetham
- Angela O'Kelly
- Billy Van Bockel
- Interchange Out East
- Leanne Henderson
- Steve Crozier





www.oonah.org.au



Oonah Health & Community
Services Aboriginal Corporation



@OonahBelongingPlace



Designed and Produced by: Natasha Zangmeister and Nikki Madgwick